

# *Plastic Injection*



***IN EUROPE***



# *WELCOME TO GABRIMAT*

*01.*



*02.*



*03.*



*04.*

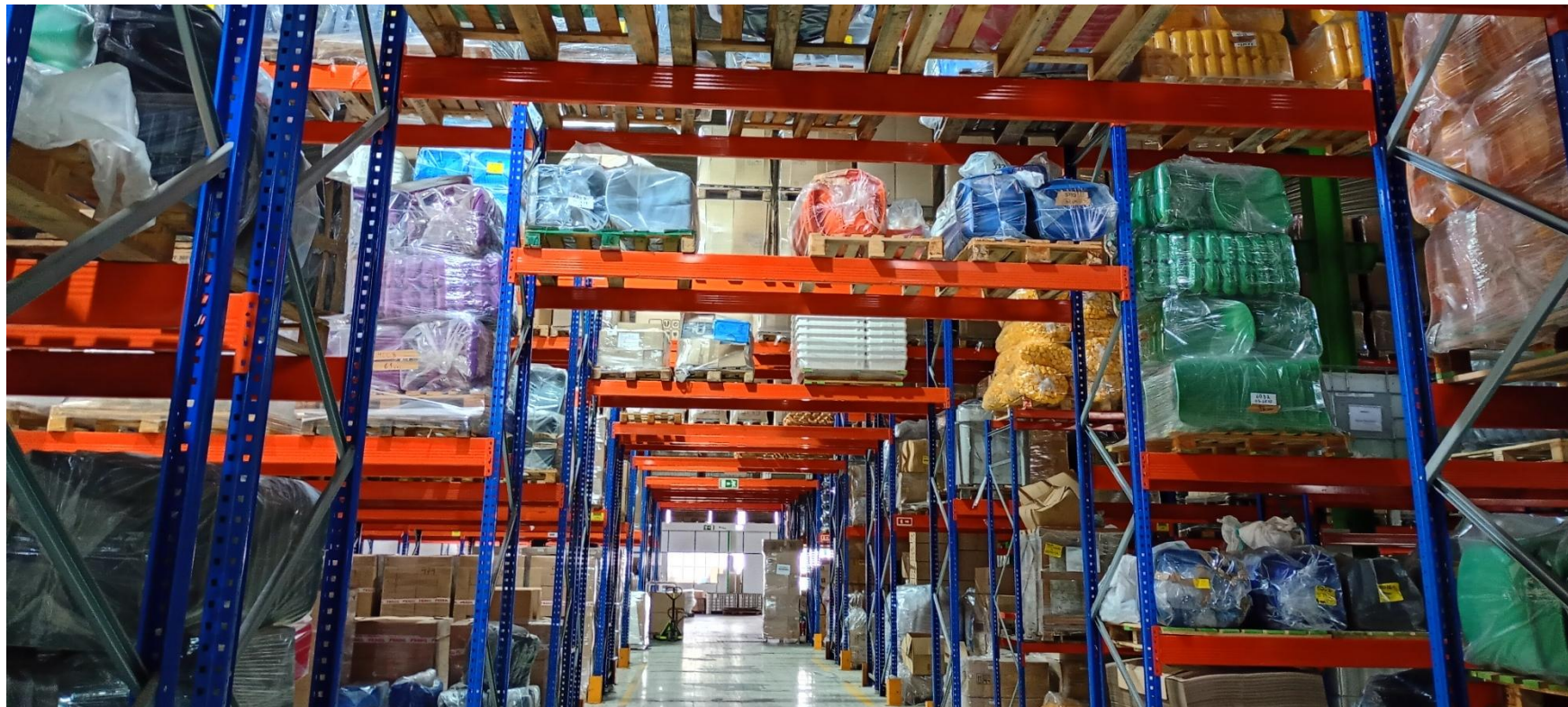


*ABOUT US*

*OUR MISSION*

*WHAT WE DO*

*WHO WE SERVE*



# *ABOUT US*

Gabrimat is a premier Portuguese industrial partner specializing in the engineering and production of high-precision plastic components.

Established in 1989 and headquartered in Maceira - at the heart of the Marinha Grande industrial hub - we leverage decades of regional expertise in mold-making and plastics.

- 9 injection machines
- 4.000 square meter
- 16 employees
- 37 years of experience

# ***OUR MISSION***

At Gabrimat, we strive to be the market benchmark in the development, injection, and assembly of plastic components.

We balance industrial excellence with responsibility - ensuring a safe, healthy workplace and a minimal environmental footprint while exceeding the evolving expectations of our global clients.

## ***OUR VALUES***



***PRECISION***



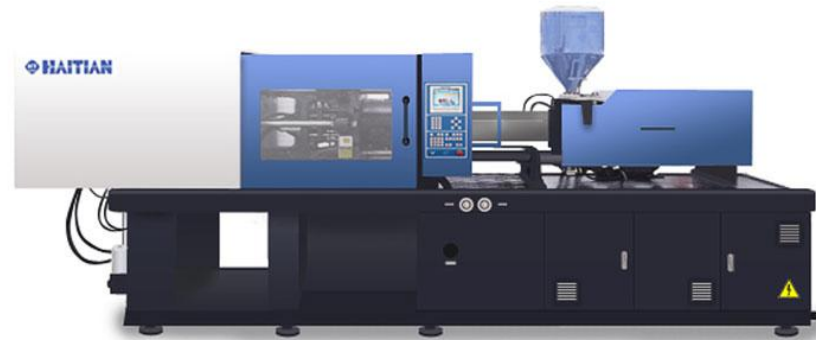
***EXCELLENCE***



***ACCOUNTABILITY***

# WHAT WE DO

## PART DECORATION



- Pad print
- Screen printing
- Heat transfer
- In-mold labeling



## AGILE ASSEMBLING SOLUTIONS

- Rapid adaptability
- Inline quality inspection
- Make-to-order

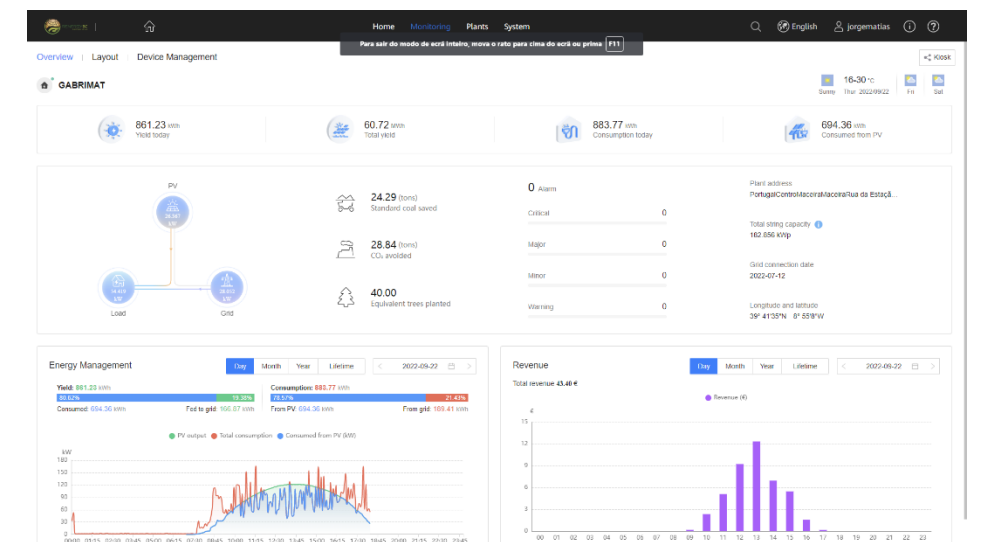
## INJECTION MACHINES

- From 35T to 900T
- Insert overmolding
- PP/PS/PE
- PA/ABS/ASA
- PMMA/PC/PC+ABS
- Reinforced materials



## WELDING

Ultrasonic welding



# MACHINE LIST

	Battenfeld Plus 350	Yizumi UN120A5	Battenfeld TM1600	Battenfeld BA2000	Haitian Zeres ZE3000	Battenfeld TM3500	Haitian MA4700	Haitian SA900
Clamping force (T)	35	120	160	200	300	350	470	900
Screw size (mm)	25	35	45	55	60	65	80	100
Max. pressure (bar)	1.575	2.569	2.116	1.943	1.800	1.777	2.000	1.840
Max. volume (cm <sup>3</sup> )	49	163.6	358	522	735	1.078	2.211	3.691
Injection capacity (cm <sup>3</sup> /s)	74	83	157	270	411	360	454	642
Tier bar (mm)	270	410 x 410	520 x 520	560 x 560	720 x 720	710 x 710	820 x 800	910 x 910
Plate size (mm)	470 x 280	623 x 623	750 x 810	800 x 865	1.040 x 1.040	1.010 x 1.130	1.210 x 1.180	1.580 x 1.600
Mold height (mm)	150 – 250	145 – 450	225 – 500	200 - 520	240 – 650	300 – 710	320 – 780	450 – 1.080
Opening stroke (mm)	200	360	480	450	-600	670	780	1.120
Plate distance (mm)	450	810	1.030	970	1.250	1.380	1.560	2.200
Ejector stroke (mm)	100	120	180	160	150	200	200	300



# ***WAREHOUSE*** ***RAW MATERIAL***

**Bulk raw material purchase**

**Purchase price stabilization**

**Guaranteed production continuity**





# ***WAREHOUSE*** ***TOOLING***

**Tool security and accountability**

**Organized tool lifecycle**

**Environmental protection and corrosion control**





# ***WAREHOUSE***

## ***FINAL PRODUCT***

2.000 square meter

Strategic inventory buffer

Minimize change over for small runs

Safety stock for Just-In-Time





# *WHO WE SERVE*

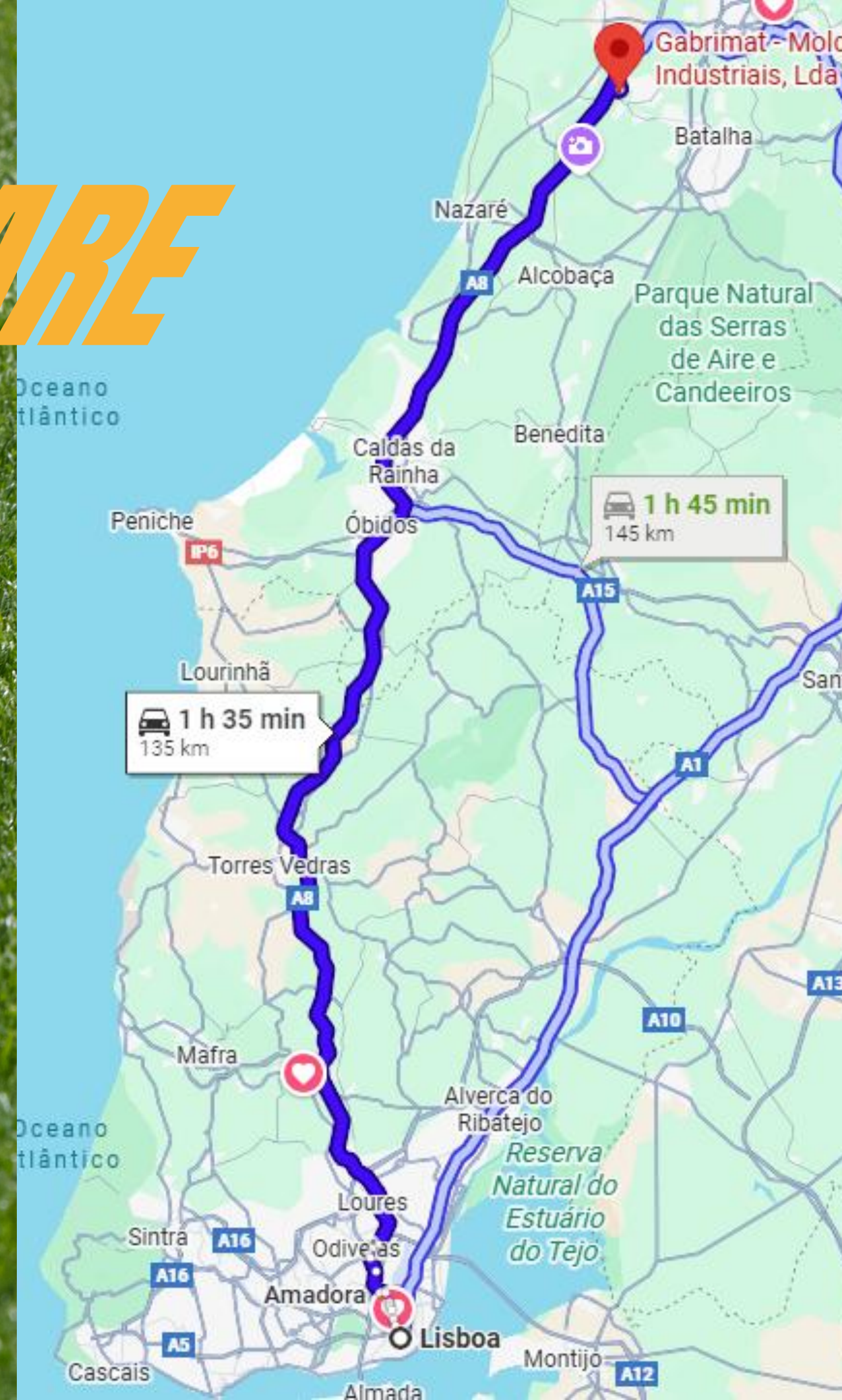
60% production  
exported globally

# WHERE WE ARE

Rua do Caminho de Ferro  
2405-012 Maceira – Leiria  
PORTUGAL

Pedro Rosa – *Account manager*  
+351 913 745 274

[sales@gabrimat.pt](mailto:sales@gabrimat.pt)  
[www.gabrimat.pt](http://www.gabrimat.pt)



*Global gateway connectivity*  
90 minutes  
Port & Air access  
*Lisbon*

*Rapid tool technical support*  
10 minutes  
“Silicon Valley” of Molds  
*Marinha Grande*

*High-Speed Export Logistics*  
5 minutes  
Connection to major arteries  
*A1 and A8*